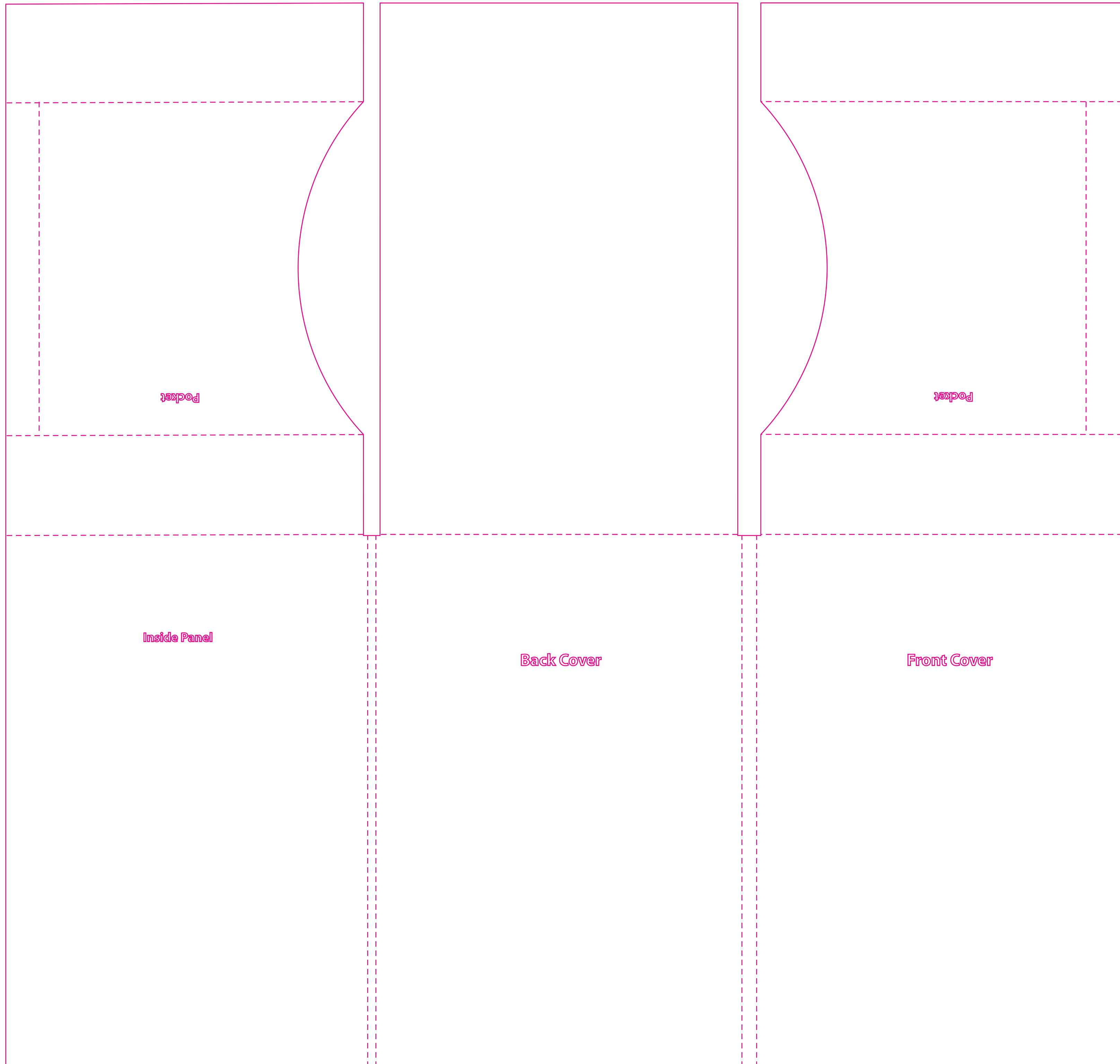


# 6 panel 2-pocket medium-tall wallet (design #CDG10077)



## read me

**DO NOT ALTER THE DIMENSIONS OF THIS TEMPLATE**

### CHECK LIST

Reference the "Prepress Tips" page from our "Developer's Spec Kit" (available on our web site).

### COLORS

Use only Process colors (CMYK) and/or Pantone spot colors from the "Pantone Formula Guide SOLID". (Note: there is a set-up fee for each Pantone color used. If you want to print with Pantone colors, please call for a custom quote.)

### BLEED

Provide 1/4 - 1/2 inch bleed on all edges. ("Bleed" is the part of the artwork which extends past