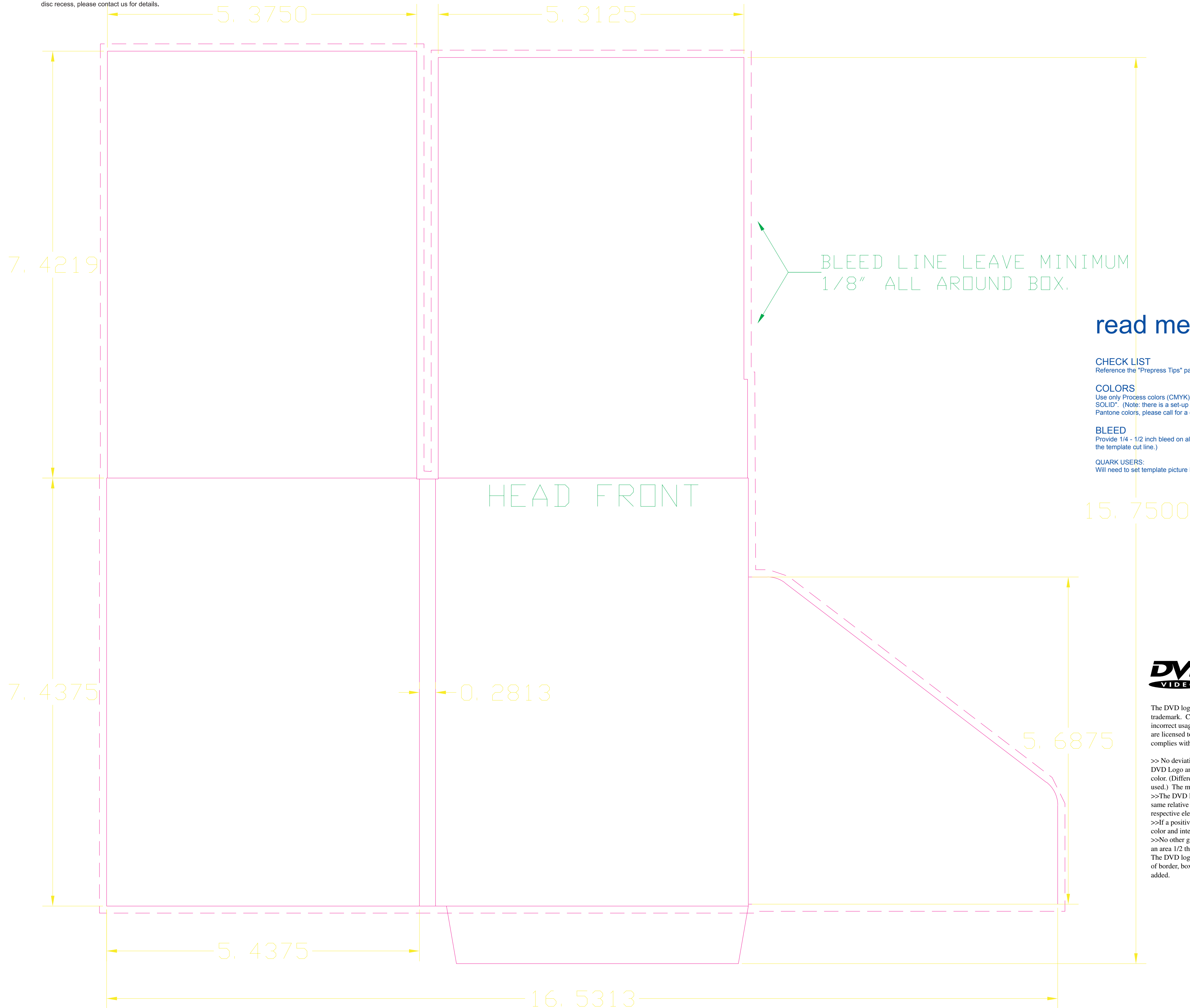


# 4 panel DVD DigiPak with 1 tray and pocket

(#25005) NOTE: Depending on the type of plastic Digi-tray available when we run your order, the disc recess in the Digi-trays may be located in the center of the tray, or about 3/8" below center. If you are wanting your artwork to align with the disc recess, please contact us for details.



BLEED LINE LEAVE MINIMUM  
1/8" ALL AROUND BOX.

**read me**



**CHECK LIST**  
Reference the "Prepress Tips" page from our "Developer's Spec Kit" (available on our web site).

**COLORS**  
Use only Process colors (CMYK) and/or Pantone spot colors from the "Pantone Formula Guide SOLID". (Note: there is a set-up fee for each Pantone color used. If you want to print with Pantone colors, please call for a custom quote.)

**BLEED**  
Provide 1/4 - 1/2 inch bleed on all edges. ("Bleed" is the part of the artwork which extends past the template cut line.)

**QUARK USERS:**  
Will need to set template picture box fill color to NONE.



The DVD logo is an internationally registered and protected trademark. CD-ROM-WORKS is not responsible for incorrect usage of the DVD Logo. The DVD Plants we use are licensed to use the DVD logos as long as the logo complies with the following specs:

- >> No deviations of the above design are permitted. The DVD Logo and its additions must only be used in a single color. (Different colors within the same logo may not be used.) The minimum size is 4mm tall.
- >>The DVD logo may be reduced or enlarged only if the same relative positions and proportions between the respective elements are maintained.
- >>If a positive or negative version is used, the background color and intensity must be uniform across the entire logo.
- >>No other graphical elements or text may be placed within an area 1/2 the height of the letter "D" in the word "DVD". The DVD logo may not be enclosed on its own by any kind of border, box or frame, nor may any text, slogan etc. be added.

Printed Side Up