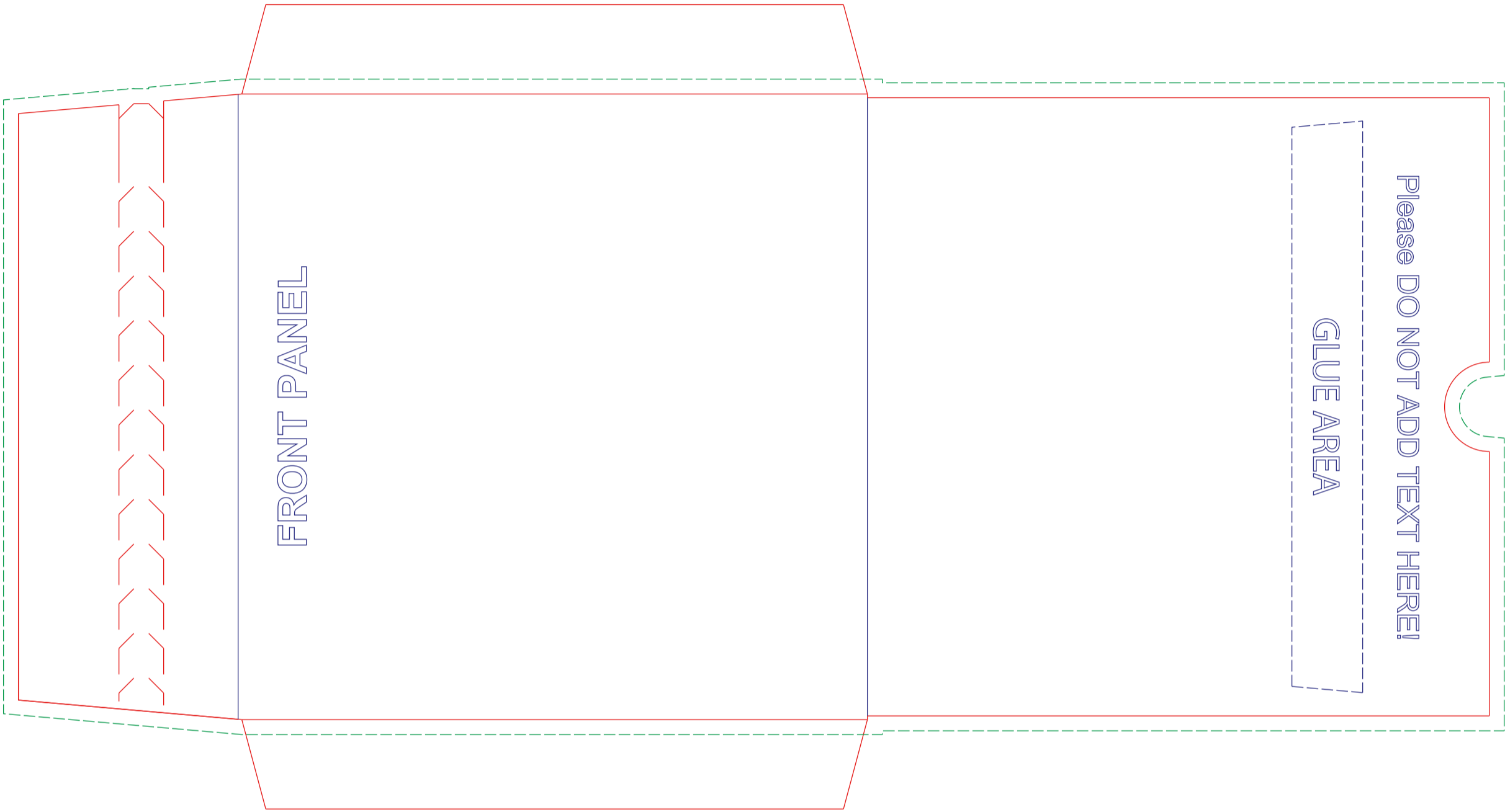


2 panel mailer (design #1005)



— Die Line
- - - Bleed
— Indent/fold

read me



CHECK LIST
Reference the "Prepress Tips" page from our "Developer's Spec Kit" (availabl

COLORS
Use only Process colors (CMYK) and/or Pantone spot colors from the "Pantone Form SOLID". (Note: there is a set-up fee for each Pantone color used. If you want t Pantone colors, please call for a custom quote.)

BLEED
Provide 1/4 - 1/2 inch bleed on all edges. ("Bleed" is the part of the artwork w the template cut line.)

QUARK USERS:
Will need to set template picture box fill color to NONE.