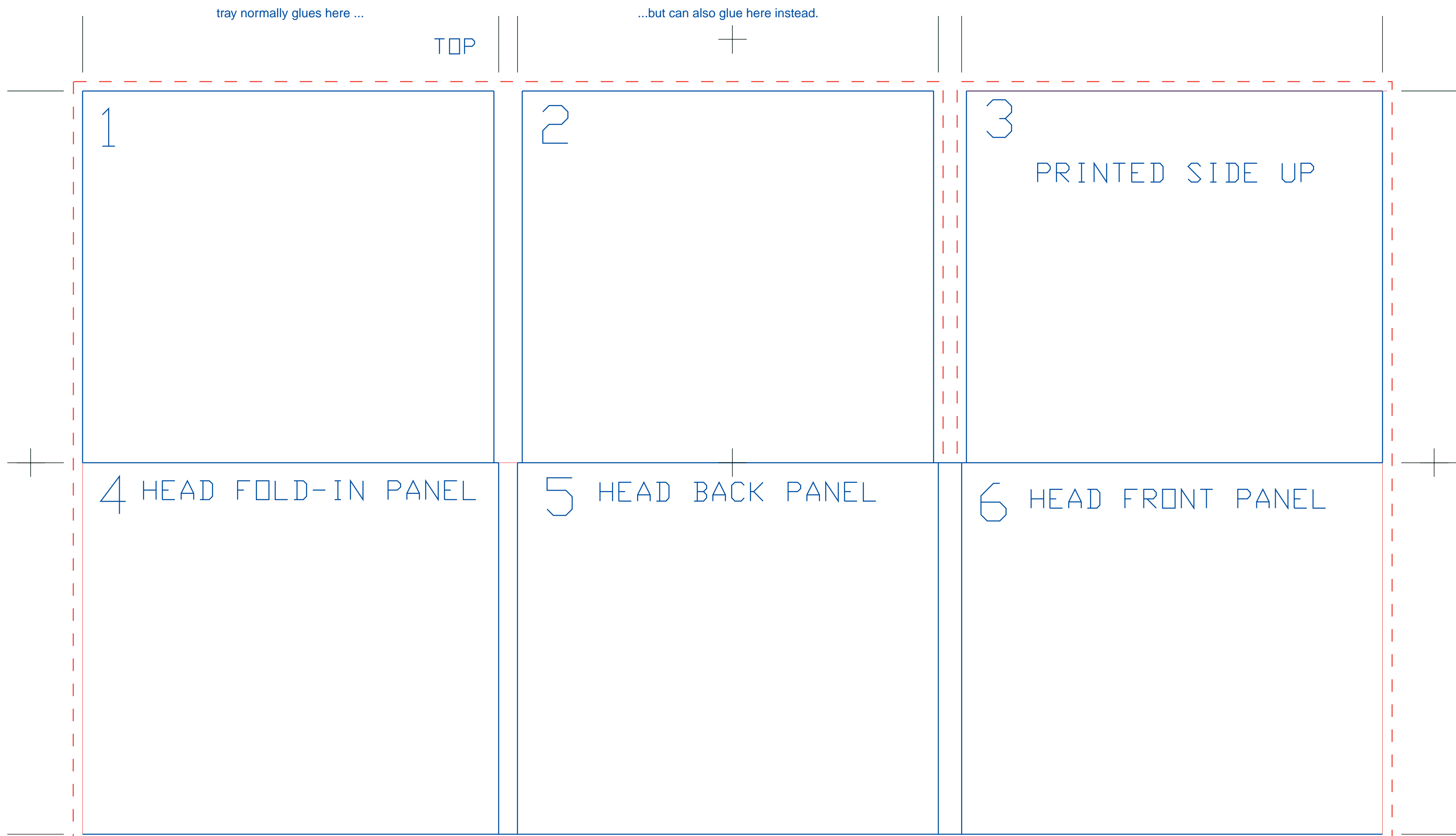


6 panel DigiPak with one CD tray

this design may also be used with the CD tray in the center panel instead of the inner right panel.



tray normally glues here ...

...but can also glue here instead.

TOP

1

2

3

PRINTED SIDE UP

4 HEAD FOLD-IN PANEL

5 HEAD BACK PANEL

6 HEAD FRONT PANEL

BLEED LINE LEAVE MINIMUM
1/8" ALL AROUND BOX.

PRINTED SIDE



read me

bullseyedisc
previously cd-rom-works
800.652.7194

CHECK LIST
Reference the "Prepress Tips" page from our "Developer's Spec Kit" (available on our web site).

COLORS
Use only Process colors (CMYK) and/or Pantone spot colors from the "Pantone Formula Guide SOLID". (Note: there is a set-up fee for each Pantone color used. If you want to print with Pantone colors, please call for a custom quote.)

BLEED
Provide 1/4 - 1/2 inch bleed on all edges. ("Bleed" is the part of the artwork which extends past the template cut line.)

QUARK USERS:
Will need to set template picture box fill color to NONE.